

Helen Melon

PROPERTIES

PLETT'S EXCLUSIVE BOUTIQUE AGENCY

BEACHY HEAD. This contemporary, exclusive, beach front holiday villa with seven suites is perfectly located on Beachy Head Drive. Situated over the road from Robberg 5 beach and unalienated state land which cannot be developed, the uninterrupted 180° view of the unspoilt coastline is exceptional and priceless and cannot be compromised.
Call Helen Ward on 083 309 9759 to arrange a viewing. **R60 000 000.00. Web Ref: 5658941**

SEA SIDE BEACHY HEAD. This is the most exclusive and sought-after real estate in Plettenberg Bay and rarely do properties in this highly sought after enclave come onto the market. This prime 915m² property offers a unique opportunity to build your own home with direct access onto Robberg Beach. **R45 000 000.00. Web Ref: 5587713**

BEACHY HEAD DRIVE. This magnificent seven bedroomed home with indescribable views and simply gorgeous contemporary interiors must be viewed to be fully appreciated. 7 Bedrooms (all en-suite); 7 Bathrooms; 2 Cloakrooms; Open plan TV/kitchen/breakfast/dining/bar/sun room; Gym; Media room; Scullery; Laundry; 4 Uncovered patios; 1 deck partially covered; 2 Pools; 2 garages; Staff accommodation. **R36 500 000.00. Web Ref: 5658931**

BEAUTIFUL FARM CRAGS. Set on a gently sloping hillside, this 35.9HA farm is accessed on the newly tarred Redford Road in the Craggs with beautiful views of fynbos hills and the Tsitsikamma Mountains and the ocean and Robberg Peninsula to the south.
Call Maggie to view 076 863 4047. **R7 450 000.00. Web Ref: 5700455**

BOWTIE. Stunning family home with breath taking views of breaking waves the lagoon & mountains. 4 Bedrooms (2 en-suite); 4 Bathrooms; 2 Guest loos; Entrance Hall; Living room; Dining room; Kitchen; Laundry; Study Nook; Staff quarters; Double garage; Double carport; Open and covered patios; Pool. **R6 950 000.00. Web Ref: 5587754**

CUTTY SARK. Incredibly well maintained and beautifully presented home enjoying Plett's iconic views over the lagoon, ocean and mountains. 4 bedrooms (3 en-suite); 4 bathrooms; Open plan living/dining/kitchen; Scullery/laundry; Entrance Hall; Linen cupboard; Snug; Covered & Open patios; Heated pool; Double garage; Storeroom; Outside toilet. Furniture included. **R6 500 000.00. Web Ref: 5587766**

SEASIDE LONGSHIPS. Don't miss this single story, facebrick, home in walking distance of Robberg beach. Living Room; Covered patio; Pool; Open plan dining/kitchen; 4 bedrooms (2 e.s); 3 bathrooms; Double garage; Double covered carport. Furniture and contents included. **R4 400 000.00. Web Ref: 5588235**

SIGNAL HILL. Immaculate apartment in sort after block with private garden and walking distance to the beach. 3 Bedrooms (m.e.s), 2 Bathrooms. Open plan kitchen/living/dining. Covered patio with built in braai. Scullery/laundry and one covered parking bay. Fully furnished. Pool in complex. **R2 900 000.00. Web Ref: 5679720**

BEAUTIFULLY APPOINTED APARTMENT IN EXCLUSIVE RETIREMENT DEVELOPMENT. Enjoy premium upmarket retirement living in this gorgeous 114m² unit which is designed with spacious rooms. 1 bedroom; 1 bathroom; Open plan living/dining/kitchen; Scullery/Laundry; 2 Enclosed patios. **R2 500 000.00. Web Ref: 5364923**

BOWTIE. Don't miss out on this gently sloping, 565m² elevated stand in this exclusive private estate. Included in the purchase price are architects plans for a single story home which have been approved by the HOA but not submitted to council. **R1 250 000.00. Web Ref: 5598267**

SIGNAL HILL. This north facing 595m² is one of the last available stands in this highly sought after area and minutes' walk from the beach & town centre. Fabulous views can be enjoyed from the upper level of a double story home. Included in the price is the beacon survey and contour plan. **R1 25 000.00. Web Ref: 5587707**

5 Formosa Place, Main Street | 044 533 1589

sales@helenmelonproperties.co.za www.helenmelonproperties.co.za



What's New in PLETT

aka Est 1983

WHAT'S THE BUZZ IN BITOU

Keeping you in touch with our WHOLE community!

Tel: 044 533 2530

Email: printshop@mweb.co.za
Website: www.helloplett.co.za



Big journeys
begin with
small steps

**PERFECT
SYSTEMS**

Jaco Grobler +27 82 676 2390
jaco.grobler@me.com

plett
it's a feeling!

CC RECRUITMENT AGENCY

+27 82 259 4610 (w/app)
www.ccrecruitment.co.za
cecile@ccrecruitment.co.za

PAMPERED PAWCH

Professional **dog grooming** in a
friendly & relaxed environment.



082 941 4887 - 061 546 8674

We offer **doggy daycare** too!

11 Marine Way - PLETTENBERG BAY

WE BUY YOUR UNWANTED
FURNITURE AND
100% WORKING APPLIANCES.
Call/WhatsApp 078 775 8677

THE BURNT ORANGE RESTAURANT

Plett Angling Club
072 704 1501

www.helloplett.co.za

WHAT'S NEW IN PLETT - 30 MARCH 2023



We meet every Monday

17h30 - 19h15

We accommodate:

Cubs (7-10yrs)

Scouts (11-18yrs)

Contact: 081 724 5366

pletttenbergbay@scouts.org.za

Adventure; Outdoors; Life Skills;

First Aid; Sailing; Brotherhood;

Badges; Planning; Fun

FOR ALL YOUR SWIMMING POOL REQUIREMENTS

- Maintenance
- Safety nets
- Pool blankets
- Chemicals
- Pump repairs
- Heaters,
chlorinators
& installations

Arlene's Pool Services

Now at Unit 2 Greenpoint Ave

Tel: 082 927 9557

arlenespools@telkomsa.net

www.arlenespools.com



PLETT
DENTAL STUDIO

DR. LOUISA PIEK
& ASSOCIATES

6 Longships Drive. 044 533 6363

www.plett dentalstudio.com



EMERGENCY NO'S



CRIME PREVENTION ASS. 082 251 8134

POLICE: 10111 / 044 501 1900/1907/1908

DOCTORS: 044 5332415 / 044 5330186 /

044 5330933 / 0445330400

AMBULANCE - Govt. 10177

Baycare Private 072 054 9110 / 044 533 6444

ER 24 hrs - 083 320 1199

Town Clinic 044 501 3700

MEDI CLINIC Plett 044 501 5100

FIRE/RESCUE EMERGENCY - 044 533 5000,

24 hrs / Office hrs 044 501 3230

SEA RESCUE - 044 533 2744 / 082 990 5975

ANIMAL WELFARE - PAWS - 083 287 9917

VETS - 044 533 3100 / 044 533 0124 /

044 533 9019

DENTISTS - 044 533 2318 / 533 2734 / 533 3446 /

533 0961 / 533 6363 / 533 0911

PHYSIOTHERAPISTS

044 533 6999 / 044 533 6966 / 044 533 3123

CHEMIST - 082 852 4696 / 044 5014620

/ 044 5331370 / 044 5332278

FAMSA 044 533 0515 / 079 640 6883

LOCKSMITHS - 044 533 3013 / 083 701 3434

/ 084 326 1806

MUNICIPALITY - 044 501 3000

MUNICIPAL HELPLINE 0861-248-686

SECURITY GUARDS-081 325 7385

/ 044 533 1691

VEHICLE BREAKDOWN - 044 5359303 /

083 269 8958 / 0445333259 / 0825682479

OPTOMETRISTS 044 533 2191 / 044 533 5195

CANSA CARE - 044 533 1813

CHIROPRACTOR - 044 533 4113 / 5330230

HOMOEOPATHS - 082 788 1550 / 082 728 7161

MOUNTAIN RESCUE: 082 339 1240 / 076 734 3119

SNAKES ALIVE - REPTILE RESCUE.

074 120 9416 / 044 534 8056

WOUND CARE 079 891 4325

PARKINSONS SUPPORT 083 2591763

RICARDO'S GLASS PLETT

072 739 0534

Glass, balustrades, aluminium
doors & windows, framed and
frameless showers, mirrors,
clear burglar bars

24/7 callout / emergency

PLETT CARPET CLEANERS

24 hr Emergency Water Extraction
Ph. 533 1139/082 572 1027.

ENJOY BETTER INTERNET
WITH LOCAL SERVICE & SUPPORT!

Visit us at 17 High Street, Plettenberg Bay
044 533 3275 | www.tcsplett.co.za

What's On

Join us at The Plettenberg for our weekly promotions.

Mon - Sun

Wednesday

Friday

Sunday

Afternoon Tea
R 215 pp

Curry Night
R 200 pp

Fish & Chips
R 200 pp

Sunday Roast
R 225 pp

Booking essential. T&Cs.

Valid until 31 March 2023

044 533 2030 | restaurant@plettenberg.co.za

THE PLETTENBERG

SAFETY AWARENESS HOUSE:

Ensure that all doors, and gates are locked and windows are closed when not at home
Remove keys from doors when leaving
Never open the door to strangers

FRAUD

Do not respond to emails or cell phone messages appearing to from a bank, which request your personal details
Never provide your ID online, password or PIN to anyone

ATM

Never accept help from strangers when using an ATM
Criminals work in teams – one to distract you while the other steals your card or money
Make sure you receive back your own bank card from the ATM

VEHICLES

Do not leave your mobile phone or other valuables visible inside the vehicle
At night, park in well-lit areas
Keep vehicle doors and windows locked at all times



BUYING OR SELLING KRUGERRANDS?

See Glen at Goldex, Knysna Mall – West End (near Spar) Tel 082 7888 700 or 044 – 382 0417

ALANON MEETINGS.

Is your home unhappy because someone drinks/drugs too much? Al anon offers help, free of charge, to the families and friends of problem drinkers/users. Meetings are held on Mondays at 13h00 at The House of Steps. Call 083 256 0841.

PLEASE KEEP OUR BEACHES AND STREETS CLEAN when taking your pet for a walk. Poo Bags are available from all the Veterinary Clinics and pet supply shops. PAWS poo bags may be purchased at R20.00 for a roll of 30 biodegradable bags. Please Support Paws and keep our Town clean. Thank you

CALLING ALL LADIES that can make soup & have basic cooking skills to volunteer for Qolweni, Bossiesgif and Pinetrees soup kitchen if you have a CV bring it along. Contact Kathy on 064 205 8368 for appointment.

GOLDEX KNYSNA offers easy access, privacy and security with all your gold, silver and Krugerrand transactions. We are no longer at 34 Main St. Knysna. Kindly find us in Knysna Mall – West End, near Spar. Tel. 044 – 382 0417 or contact Glen for a home visit on 082 7888 700.

ACCOMODATION WANTED on plot or farm diesel mechanic and electrical all rounder 082 7281 240 Desmond

ALCOHOLICS ANONYMOUS.

Call 078 045 6988

ZUMBA FITNESS

Classes daily, Monday to Friday
Mornings and evenings
Call Merle 0815805520

SUSPECT DOG FIGHTING ?

Phone Manager Public Safety/Law Enforcement all hours. You can stay anonymous. Tel. 044 533 5000

HAMILTON'S
PROPERTY  PORTFOLIO

the boutique experience

Mandy Leigh | 083 299 9222

BITOU Vineyards

IS CELEBRATING ONE YEAR

A big thank you to everyone who has supported us in our first year.

Be part of our celebration the month of April and get a 5% Discount on your bill.

Wine Tastings, Cocktails, Cakes, Meat Platters and Cheese Platters and A la Carte Menu



For Bookings, Weddings, Function or
Exclusive Venue Hire

Contact Us:

info@bitouvineyards.co.za
bookings@bitouvineyards.co.za

TRADING HOURS:
11am – 6pm
Tuesday till Sunday
Sundowner from 4pm -6pm

5% DISCOUNT

On your bill for the month of April
T&C Apply



@BITOUWINES



BITOU VINEYARDS



044 004 0369

Present this add to our friendly Front of House and get your 5% discount off on your bill.

66

Each of us is born with a life purpose. Identifying, acknowledging and honouring that purpose is perhaps the important action successful people take.

- JACK CANFIELD



On Purpose

dare to be you

Strengths Workshop Plett 2023 Kids ages 10 - 18 years

For too long parents, teachers and society have focused on identifying and fixing "kids" weaknesses to improve academic performance.

What if every child can find success in school, their relationships and life if we start focusing on the strengths they have, rather than on what they lack. Every child is beautiful, talented, and gorgeous. Its just where?

Research shows that only 2 out of 10 people get to play to their strengths. Life is too short to be one of the 8 that get stuck doing what they can just to make it through another day. Be bold and take the step.

Discovering your strengths is a rewarding process if you know what to look for. Every action respectful or defiant, in and out of the classroom, provides an opportunity to discover a person's unique set of strengths. The boy who is scolded for speaking out in class, may have untapped potential for debate. The girl who is more engaged on the tennis court than the classroom may have a hidden knack for physics. A child drawn to one activity or household chore over another is driven by natural inclinations that can be identified and applied to schoolwork.

Dr Ross will show you how to make such connections in everyday life, and in turn help kids implement the strengths they reveal in school, their relationships, life, and future career.

Parents don't we all want our children to be seen and valued for who they are and the unique gifts they bring to this world?

Cost R 900 per student – cost includes psychometric strength assessment, workshop, and parent group feedback. Strength assessment done online prior to workshop.

Date Monday 24 April 6pm-9pm
kids' workshop
(Parent feedback to be arranged)
Session 1 kids Workshop

Ross: 083 251 5626

Passover Service

Plett Community Church



Friday 7 April @ 07h00 - Hobie Beach
Bring own chairs, blankets, coffee and rusks

WORK WANTED

The following people are all looking for work, let's support where we can:



VERONICA is looking for a domestic work, hard worker reliable call 073 1676625 / 063 304 3025

GIFT is looking for a caregiver work have experience and reliable, honest hard work ref avail call 073 167 6625 / 063 304 3025

ENOCK is looking for a job as a gardener and housekeeper call 079 2430 432

PATIENCE is looking for a job as a housekeeper, care taker for elderly people call 079 2430 432

TRYWIN Malawian lady is looking for a housekeeping job call 060 481 6888 for ref call 083 302 4987

WANANGWA is looking for a 2 days Tues, Thurs job as a housekeeper with 9yrs exp call 060 469 1450

ALFRED is looking for general work, farm worker, housekeeping and painting ref avail call 078 861 6969

JOSHUA is looking for a job as a gardener call 073 751 9249 for ref call Mr John Wall Goose valley on 072 149 3351

CHRISTOPHER is looking for a weekend job as a gardener with ref call 081 057 9768 / 063 381 3551 for ref

call Sue van der Gaast on 073 8454 141
LYSON is looking for a job as a full time gardener call 063 583 2690

JOSEPHINE is looking for a work as a housekeeper or baby sitter with exp with early childhood development cert and drivers licence code B call 073 571 2077

SEKANI is looking for a domestic work only Tuesdays call 073 630 5335 for ref call 072 2017 666

PROMOTE is looking for a part-time job as a domestic call 062 1288 988

AMOS is looking for driving job with code 10+pdp license

KETTIE is looking for a job as a housecleaner with exp call 064 372 0311

PETER is looking for a job as a gardener, painting with exp call 068 170 3095

GEORGE is looking for a job for 5 days call 083 883 2498

AKHONA is looking for a domestic work for 3 days call 078 139 7736

BEN EVENTS WE OFFER experienced staff for any event in garden route contact us on 073 0188 373 ben@benevents.co.za
www.benevents.co.za

THE LINEN DEPOT 5 MARKET STREET KNYSNA we stock huge range of quality ex -hotel linens at unbeatable prices 079 6836 783

DEFY REPAIRS to stoves, washing machines, dishwashers, tumble driers & micro-waves. Prompt service + Guaranteed repairs. Call Jon CX Appliance Plett 0721493351

RESIDENTS AND VISITORS: Please do not put out your garbage bags until the morning of collection. There are baboons in the area, as well as seagulls which tear open the bags

www.helloplett.co.za

Your complete directory of who does what and where to find them in our beautiful Bay. Remember to list your business with us, so people can find you!

ART CLASSES

with Annette Visser
063 000 0345

for information / to enrol

WHAT'S NEW IN PLETT - 30 MARCH 2023
WWW.HELLOPLETT.CO.ZA

DO YOU NEED LAMINATING?

COME TO THE PRINT SHOP
20 HIGH STREET,
PLETTENBERG BAY
044-533 2530

HOME FOR HOPE SOUP KITCHEN

The above mentioned organisation is asking for your kind donations of stamp, mielies, bread, soup mix, pasta and veggies for ±150 children in KwaNokuthula. Kindly leave at Print Shop for collection. Thank you. Eng: Theodora Krabie (073 816 9021)

FIREPLACE SERVICES AND REPAIRS.

Get your fireplace into tip top condition. Serviced, refurbished, chimney sweep, fault fixing....
Call the Fireplace Guy on 083 628 0300.

HÉLÈNE SERFONTEIN Physiotherapy.
084 514 7098

Moon Shine on Whiskey Creek - The Craggs. We are offering super special discounts for off-peak stays. From 15% to 25% Direct bookings only
www.whiskeycreek.co.za
WhatsApp 072 2006656

ELECTRICAL PLUMBING SERVICES
available 24 hours contact Desmond 082 728 1240

ALEX PLUMBING 24/7 SERVICES cc (PTY) LTD: New installation, Bathroom renovation, house renovation, Toilet, Basin, Bath, Showers, Galvanized pipe removal & all General Maintenance. Phone 082 838 0591

GOLD TRADER KNYSNA HAS MOVED to Knysna Mall – West End (near Spar). We are now called Goldex and are no longer in Main St. Knysna. Tel. Glen 082 7888 700 or 044 - 382 0417. Also open Sat. mornings.

Angelina Lewack is looking for domestic work on Tuesday, Wednesday and Thursday.
References are available.
Please contact Angelina at tel.
078 - 606 9470. (Incl. whatsapp.)

GET FIT GET HEALTHY
Have fun! **Zumba Fitness**
Call Merle 081 580 5520

PARKINSONS SUPPORT GROUP
Maurice Hartshorne. Tel: 083 2591763

IF YOU SEE a lost or injured animal, or suspect abuse, call PAWS on 083 287 9917

ADVANCED FOOT CARE Sr Gillian
essential service provider corns Callouses etc 072 672 4162

VACANCIES

PLEASE SEE BELOW FOR CONTACT DETAILS AND CLOSING DATE

1 X RECEPTIONIST

- Grade 12
- Post matric hotel school qualification would be advantageous.
- 1-2 years' experience in a five-star property
- Computer literacy & good numeracy skills
- Excellent communication skills
- High level of English proficiency
- Must be motivated, enthusiastic, and energetic
- Must be a team player, with a positive attitude
- Must be willing to work shifts

2 X MAINTENANCE ASSISTANT

- Grade 12
- 1-2 years' experience as a handyman
- Good communication skills
- Must be motivated, enthusiastic, and energetic
- Must be a team player, with a positive attitude
- Must be willing to work shifts
- Must have knowledge of tiling, painting, carpentry, plumbing and electrical work
- Must have an understanding of safety standards

1 X NIGHT CHEF RELIEF / SCULLER

- Matric.
- Certificate in food Preparation and Cooking or Professional Cookery (Advantageous).
- 2-3 years' experience working as a chef in a 5-star hotel or similar establishment.
- Prepare room service orders
- Responsible for cleanliness of the kitchen
- Responsible for cleanliness of food storage areas
- Cleaning of all large kitchen equipment, pots, pans, ovens etc
- Must understand Hygiene and safety standards.
- Responsible for cleaning floors, service areas, cooking equipment, service equipment & walls

1 X CHEF DE PARTIE

- Matric Certificate in food Preparation and Cooking or Professional Cookery (Advantageous).
- 2-5 Years experience in a 5-star hotel or similar environment
- Must be hard working and dedicated, motivated, enthusiastic, and energetic
- Must be a team player, with a positive attitude
- Must be willing to work shifts
- Full Responsibility for the running of the section required
- Must understand Hygiene and safety standards.
- Utilize excellent knife skills
- Ensure all dishes are being prepared to the correct recipe and to the correct quantity and food are always of the highest quality.

Closing Date : Friday 31st March 2023

All C.V's to be sent to hr-admin@collectionmcgrath.com



POP IT INN

A-GRADE SAFE SELF STORAGE

New state of the art
security system allows for
convenient key card
access to suit your
individual needs

For more information contact
Rina van Huyssteen

call or whatsapp
079 268 2306

popitinn@gmail.com

www.popitinn.co.za

JACQUI BOTHA
PHYSIOTHERAPY
082 656 2979

RUG AND TAG CLEANER we clean
carpets, floor rugs, upholstery, car interior,
loose mats, mattresses, cushions, blinds,
windows & paving we offer domestic worker
services, self catering, holiday Houses,
resident houses, student cottages, malls
outside & toilets, cleaning after schools,
churches, parties, weddings, office
cleaning, construction on sites, Gardening
service, looking after houses, dogs & cats,
laundry collect & drop when its ready, car
wash, garden service, Roof cleaning. We
visit where you are either @ work/home
also baby sitting meet / greet contact
Eslina @ 073 8305 550 / 060 375 9988.
eslina33@gmail.com website:
www.plettcleaners.co.za. Refs available



CHARMAINE'S HOUSE OF HAIR

CHARMAINE 072 657 0156
3 CRESCENT STREET, BELOW ZANZIBAR, PLETT



Robberg
VETERINARY CLINIC

Your
best friend's
friend

Dr Brendan Tindal
Dr Pauline van der Watt
Dr Clare Schroeder
Dr Sunel Jooste

Tel: 044 533 0124
A/H: 076 909 2577
info@robbergvet.co.za
56 Longships Drive, Plettenberg Bay



*Wishing the
following people
a very happy
birthday this
coming week*

30 March
Ewald Stander; Kyle Stohr; Kym Quincey
Michelle Holloway; Angela Ballie

31 March
Sue van der Gaast; Riana van Heerden

2 April
♥♥♥ Daniella Muller ♥♥♥
Madeleen Janse van Vuuren
Ashleigh Pitchen; Graham Hyde

4 April
Jan Grobler; Leanne Armour
Giovanni Zanette; Kim Matter
Khanya Maselana

5 April - Emily-Rose Vale

IF YOU SEE a horse, mule or donkey in
need of help please phone 072 370 2830

PSYCHOLOGIST, DR JANE LUCK,
Plett/Crags, 083 256 0841.

**BROCHURES, PRICE LISTS,
STATEMENTS, COMPLIMENT SLIPS,
BUSINESS CARDS, LABELS,**
... You name it... We do it!
Great prices, good quality.
at The Print Shop - 20 High Street, Plett
Your local printers.

**CUTE HOUSES & THATCHED
COTTAGES, DREAM DWELLINGS &
MODERN MANSIONS** designed & drawn
by CHRISTINE WARD - 044-535 9111

Plettenberg Bay Gymnastics Club



Fun classes for all children
from 3yrs old and older.

Competitive classes available for all
children in Primary & High School.
Keep fit, improve strength,
flexibility & learn amazing new skills
and tricks!

Bring your child for a
FREE lesson any time.

Email:
plettgymnasticsclub@gmail.com
For any further info
and to book a spot.

WHAT'S NEW IN PLETT - 30 MARCH 2023
www.helloplett.co.za

RUG AND TAG CLEANER we clean carpets, floor rugs, upholstery, car interior, loose mats, mattresses, cushions, blinds, windows & paving we offer domestic worker services, self catering, holiday Houses, resident houses, student cottages, malls outside & toilets, cleaning after schools, churches, parties, weddings, office cleaning, construction on sites, Gardening service, looking after houses, dogs & cats, laundry collect & drop when its ready, car wash, garden service, Roof cleaning. We visit where you are either @ work/home also baby sitting meet / greet contact Esline @ 073 8305 550 / 060 375 9988. esline33@gmail.com website: www.plettcleaners.co.za. Refs available

SNAKES ALIVE - REPTILE RESCUE. Snakes play a very important role in our eco-system. Don't kill them, call us. We capture and re-release them back into wild protected areas. 074 120 9416/534 8056

ALANON MEETINGS. Is your home unhappy because someone drinks/drugs too much? Al anon offers help, free of charge, to the families and friends of problem drinkers/ users. Meetings are held on Mondays at 13h00 at The House of Steps. Call 083 256 0841.

PELLS / MYBURGH PHYSIOTHERAPY
044 533 6966

CLINICAL PSYCHOLOGIST
Dr Ilza Botha
Cell: 076 116 1132

DO YOU NEED BUSINESS CARDS?
COME TO THE PRINT SHOP
20 HIGH STREET
PLETTENBERG BAY
044-533 2530

REACH FOR RECOVERY - Breast Cancer Support Group. Phone June 044-533 3062



**WE SPECIALIZE IN TRANSFERS,
SHUTTLES AND CAR RENTALS.**

Neels 082 604 5943
Jess 079 742 2075

Safety and security don't just happen, they are the result of collective consensus and public investment. We owe our children, the most vulnerable citizens of our society, a life free of violence and fear – Nelson Mandela
Child Welfare Plett
044 533 2257

www.helloplett.co.za
Your complete directory of who does what and where to find them in our beautiful Bay. Remember to list your business with us, so people can find you!

IF YOU SEE a lost or injured animal, or suspect abuse, please call PAWS on 083 287 9917

DRUG PROBLEM?
Narcotics Anonymous
Helpline 086 1006 962 www.na.org.za

PLEASE NOTE: Disclaimer:
The views expressed in What's New in Plett are not necessarily those of the Editors or Staff of What's New in Plett.

COMPUTER SUPPORT.
Internet Connectivity
VOIP - Voice over IP.
Backup Solutions / Cloud Services.
VPN - Virtual Private Networks.
Hardware & Software Solutions.
Enterprise Email.
Call Jaco at Perfect Systems 082 676 2390

ZUMBA FITNESS, a Latin inspired dance fitness programme, designed to enhance flexibility, an excellent cardio workout, strengthening the core, and all this whilst having fun. Call Merle 081580 5520

LAX WITH TAX?
Take part in being tax smart!
Contact Sean M. Com (Tax), CA (SA)
for professional advice 044 533 0598

COAST2COASTALUMINIUM

YOUR ONE STOP SHOP

Now offering...

- Aluminium Windows & Doors
- Window / Door **REPLACEMENT**
- Framed / Frameless Showers
- Blinds & Awnings
- Gates & Motorising
- Steel Art
- Folding / Stacking Doors
- Frameless Glass Doors
- Balustrades Glass / Stainless / Mild Steel
- Custom made Stair Cases (Shutter or Steel)
- Clearview Fencing
- Garage Doors & Motorising

CALL ETTIENNE 073 329 4442

CALL BRANDON 081 497 9788

*Or visit our show room at Shop 13 Sun Centre,
Main Street, Plettenberg Bay. (Below ABSA)*

ONEDIRECTIONSTAIRS

PERFECT SYSTEMS

- Internet Connectivity
- VOIP - Voice over IP
- Backup Solutions / Cloud Services
- VPN - Virtual Private Networks
- Hardware & Software Solutions
- Computer Support
- Enterprise Email
- Surveillance / Cameras

FOR ALL YOUR
**I.T & COMPUTER
SOLUTIONS**

Jaco Grobler +27 82 676 2390
Jaco.grobler@me.com

CHATTERBOX - LIFE AS A PART TIME FARMER

First and most of all is the sudden death of a great friend I hear in Plett, Grant Butterworth. Such a happy guy and with a lovely wife and two children and he just died at quite a young age for nowadays. Great golfer and party man and always laughing and always with all the boys. They are seriously going to miss him. I never saw him talking much to the girls, but the boys were a different matter, and there he could let rip. Sweet Grant, our friend and chiropractor to all, we are going to miss you at every occasion. I first met him when we arrived in Plett. As usual I needed some kind of medical treatment and his treatment was the answer. We laughed a lot during that first treatment, I told him that he good easily flatten me with his strong hands. His little girl used to wander into the room and chat to me, when I was in the recovery room. One needed that time after Grant's medical bashing. Eventually he became too strong for my small frame and I moved to physiotherapist. Nice and gentle. How does someone so big and so strong, just suddenly have a heart attack. Travel well Grantie Boy. Loved by everyone my darling.



Feels strange to be thinking about chatterbox again. It used to be part of my life thinking of things to talk about. Did I tell you that Beloved now has a little tree farm as a hobby which he loves. Actually they are not little trees they are huge and they are called Polonius. They grow extremely fast and the wood in weight is almost as light as balsawood. The Colour of the wood is almost like a pinkish/white colour and is very hard wood, used a lot for making furniture because of its beauty. When he first bought the saplings and had his piece of land, he was there all the time and he loved it. Now staff is very expensive and they need permanent supervision it's not easy when he has his own business or should I say his real business to run. He actually prefers to be a farmer. He doesn't go there much anymore because of time and money. I planned a little surprise for him and have found a friend, an ex farmer, to help me there and bring it back to it's former glory. Of course the weather has not been kind and the trees need lots of water, and actually TLC. He used to show his little farm to everyone, but not over the last few months. He's away in Johannesburg at the moment so I have taken the bull by the horns. My horror is the puff adders living there. Lots of love to all my old and new fans.



Put their paws in experienced hands

Dr Pete Dahlmann

Tel 044 533 3100
A/H 082 956 2111

marinewayvet@gmail.com

Corner Marine Drive & Muller Street
Plettenberg Bay

Metamorphosis Massage



- Lymph Drainage
- De-Stress
- Fibromyalgia

Gift Vouchers - Tailor Made

Ilse 082 422 1492

61 Robberg Road

www.metamorphosis.co.za ilse@metamorphosis.co.za

GET FIT GET HEALTHY

Have fun! **Zumba Fitness**

Call Merle 081 580 5520

PARKINSONS SUPPORT GROUP

Maurice Hartshorne. Tel: 083 2591763

IF YOU SEE a lost or injured animal, or suspect abuse, call PAWS on 083 287 9917

SOMETIMES MISS THE WHAT'S NEW?

Don't be sad... We're also on the Web.
www.helloplett.co.za Read the whole publication on your computer.

Unplanned Pregnancy **HOPE CENTRE**
can help. 078 177 5119

WHAT'S NEW IN PLETT - 30 MARCH 2023
www.helloplett.co.za



AIRCONDITIONING

**SUMMER SPECIALS
ON AIRCON UNITS**

Garden Route Airconditioning
(GR/AC)

is situated in Plett and we supply,
install and maintain all aircon units,
cold/freezer rooms,
under-bar fridges, upright fridges,
domestic household fridge/freezers,
washing machines, tumble driers,
microwaves, etc.

also supply solar aircons and air purifiers

Our Chigo Lite and Green Aircons are
corrosion treated in the factory
and increase operation
for more than 5 years.

GR/AC offer 3 years guarantee
on all their Aircon units
provided units are serviced once a year.

Neels Bouwer:

082 604 5943

neels@gardenrouteaircon.co.za

www.chigo.co.za

Plett, Knysna & Sedgefield

A.A CONTRACTORS

TREE FELLING & DEMOLITIONS
GARAGE & YARD CLEANERS
REFUSE & GARDEN REMOVAL

082 728 1240

Letter via The Editor

The VMHC- Voluntary Medical male circumcision program is a program that works hand in hand with the department of health.

We have these programs once a month and we have professionals that do the circumcisions. Additional information is also provided on the day or at your nearest health facilities and you can also get it from the mobilisers. We cut from the age of 10 yrs and older. It is utmost important to remove the foreskin to prevent getting any infections of any kind and it's a very safe way to do it.

For any information or a booking, please so contact me on Facebook/ Whatsapp (0735135119).

Kind regards

Frederick Shaun Terblanche



HÉLÈNE SERFONTEIN Physiotherapy.
084 514 7098

DO YOU NEED PRINTING OR SCANNING A4 & A3

COLOUR AND BLACK & WHITE
COME TO THE PRINT SHOP
044-533 2530

PLETT GOLD EXCHANGE we buy all gold
jewellery in any condition contact Sisko
084 341 8067 Plett to Sedgefield covered

INTERNET CONNECTIVITY

Call Jaco at Perfect Systems 082 676 2390

REACH FOR RECOVERY - Breast Cancer
Support Group. Phone June 044-533 3062

CASH IN YOUR UNWANTED GOLD

jewelry, silverware, diamonds and top end
watches at Goldex, Knysna Mall - West
End (near Spar). Tel. Glen 082 7888 700 or
044 - 382 0417.

DO YOU NEED COLOUR COPIES?

THE PRINT SHOP, 20 High Street,
Plettenberg Bay, 044-533 2530

Plett Carpet Cleaners

EST 1986



We clean carpets,
upholstery, blinds,
curtains, rugs
& mattresses.

We clean & seal tiles!
**Professional & Reliable
Services. Alison Bryant**

082 572 1027

**The Experts in Carpet
& Upholstery Care!**

24 HOUR CRISIS LINE -Drug Addiction,
Alcoholism, Depression, Relationships
& Obsessions. Call 044-532 7547.
Discretion is assured.

IF YOU SEE a lost or injured animal, or
suspect abuse,
please call PAWS on 083 287 9917

PLEASE NOTE: Disclaimer:

The views expressed in What's New in Plett
are not necessarily those of the Editors or
Staff of What's New in Plett.

WHAT'S NEW IN PLETT - 30 MARCH 2023
www.helloplett.co.za

Dr Martin Kelly Plastic & Reconstructive Surgeon

Hutton Medical
Wellness Centre
4 Longships Drive, Plett
Plettenberg Bay
044 533 0518

reception@huttonmedical.co.za



www.helloplett.co.za

Hello Plett Business Directory

Your directory of businesses,
services, restaurants &
entertainment venues in our area.

AVAILABLE ONLINE

Make sure your business is listed
A Print Shop Publication

20 High Street - 044 533 2530
printshop@mweb.co.za



The 176 000 hectare Greater Addo Elephant National Park is the third largest National Park in Southern Africa.

The variety of wildlife found in the Park is astounding, with 417 species of birds, 95 kinds of mammals, including the Big 5 and of course the 600 elephants that roam there, it is an absolute treat for nature lovers.

MORNING GAME DRIVE

Collection from Guest House in Summer-Strand P.E between 06h00 - 06h30

Duration of Game Drive 07h00 - 12h00
Refreshments are available throughout the drive.

AFTERNOON GAME DRIVE

Collection from Guest House in Summer-Strand P.E between 13h00 - 13h30

Duration of Game Drive 14h00 - 18h00
We stop mid-afternoon at a Dis-embarkment point or picnic area for teas, coffee, refreshments, scones and snacks.

drive and narration will be done by our very knowledgeable guides.

INCLUDED IN GAME DRIVE
An experienced Guide |
All drinks and snacks | Blankets

Contact Clint Wild to book a drive
066 1799 170

reservations@addogamedrives.co.za
www.addogamedrives.co.za

In memory of our precious
Charmaine Wild,
please help Hospice
/ Plett Aid Foundation
to continue doing the amazing
job they do for our
Plett Community.

Plett Hospice Banking Details
FNB, Plett branch, 210514
Acc no: 62048095063
Acc name:
The PlettAid Foundation.

Plett Evangelical Fellowship

As for me and my house,
We will serve the Lord. Joshua 24:15

Anton: 082 878 4193 / Graeme 083 628 1648

A word fitly spoken is like APPLES OF GOLD in a setting of silver-Proverbs 25v11

Some years ago, there was a cartoon where a certain army scout was sent to spy out the enemy and report back to his superiors. He was unable to locate the enemy forces so in desperation he reported "I have seen the enemy and it is us". I don't know what his commanding Officer thought, but his words are profoundly true because the reality is that our greatest enemy is not out there waiting to attack us, but the real enemy is here in our midst - in our own minds and hearts. The Book of Galatians chapter 5 describes numerous enemies which are waging war in Christians' lives. They are not external forces such as persecution, but what the Bible calls our flesh or our character. Some of these enemies are listed in verse 19-21: "hatred, discord, jealousy, fits of rage, selfish ambition, dissensions, factions and envy". All of these are in conflict with the fruits of the Spirit listed in verse 22: "love, joy, peace, long-suffering, kindness, goodness, faithfulness, gentleness and self-control". As Christians we need to look at ourselves and recognize our failings and shortcomings and take responsibility for them and stop the blame game that all our troubles are the fault of our parents, friends, church, society, etc. We are solely responsible to make a conscious decision which side of the conflict we are allied to - are we going to continue justifying our character flaws or surrender our will to the Lord and allow the Holy Spirit to grow fruit that will feed and enrich this world and glorify God? Galatians 5 verse 24 says: "Those who belong to Christ Jesus have crucified the flesh with its passions and desires". Over the next few weeks I should like to highlight the very real conflict between the flesh and the Spirit starting today with hatred at war with love. Hatred is a terrible word because it reflects a mind and heart

of venom and always leads to violence either physically or emotionally and is totally destructive to the well-being of not only the object of hatred and innocent bystanders, but also the one who hates. That doesn't mean we have to like everybody, but God does expect us to love everybody. Jesus said "You have heard that it was said, Love your neighbour and hate your enemy. But I tell you, love your enemies and pray for those who persecute you". (Matthew 5v43.) This command is impossible for us to do unless we allow the indwelling Holy Spirit to produce the fruit of love. Who is winning the war in your life? Hate which kills or love which brings life? God Bless, Graeme Greenwood

PLETT HANDYMAN - General Home Maintenance. 072 477 3230

Please Help!!!

KEEP PLETT CLEAN

We need your help with wages please Plett!!!

Nedbank Code 198765 Account number 1096711974 ADD YOUR COMPANY OR YOUR NAME AS A REFERENCE

GOLDEX KNYSNA MOVED to Knysna Mall - West End in Dec.2020. We are now more secure and easier to access. Come in for a visit! Tel. Glen 082 7888 700 or 044 - 382 0417.

GET IN SHAPE, Lose weight, have fun.
ZUMBA FITNESS, Merle 0815805520

INTERCEDING PRAYER NETWORK/ VOORBIDDING GEBEDSNETWERK

Enquiries/Navrae: Cell 0834792037 Pastor Sam Fortuin

THE POTTER - The studio Shop with a difference! Quality Ceramics and a vast range of Olives. situated on the N2 between Plett & Knysna. Tel 044 532 7735

INTERNET CONNECTIVITY

Call Jaco at Perfect Systems 082 676 2390

PLEASE NOTE: Disclaimer:

The views expressed in What's New in Plett are not necessarily those of the Editors or Staff of What's New in Plett.

WHAT'S NEW IN PLETT - 30 MARCH 2023
WWW.HELLOPLETT.CO.ZA

THRIVING or SURVIVING?

LIFE COACHING

ANTONY GARDY

INTEGRAL PROFESSIONAL COACH

www.antonygardycoaching.com





THE VAN PLETTENBERG HISTORICAL SOCIETY

TOPIC: The Battle of Isandlwana
DATE: Thursday 27th April, 2023
VENUE: The Burnt Orange, Plettenberg Bay Angling Club
TIME: 17:00 for 17:30
PRICE: R300 per head (includes venue, talk and snacks)
 A cash bar will operate.
SPEAKER: Andrew Rattray
BOOKINGS: Online via QUICKET or cash from Barneys Kiosk,
 Market Square
ENQUIRIES: info@plethistory.org or tel: Len: 082 452 1799

The Battle of Isandlwana, during the Anglo-Zulu War of 1879, has been the subject of conjecture and controversy for over 140 years.

Calling on the old Zulu stories of the battle to recreate the events of the day, **Andrew Rattray** will explain how this battle was won, giving insight to the brave warriors and Zulu chieftains who fought and died in defence of their King and country - as well as those on the British side, thousands of miles from home, who fell to stain the earth with brave men's blood.

ATTENTION HOTELS GUEST HOUSES

we buy all your discards sheets, towels, linens etc. 076 9834 008

PINEDENE STORAGE Safe, secure, easy access on tar road near Airport. Store anything from Household goods to boats and cars. Dave & Jacky Martin Phone/Fax 044 533 9119 Cell 082 849 5011

DIAMOND EXPERT - I will buy your diamonds or provide professional advice and valuations if you want to keep them. 083 266 2500

REACH FOR RECOVERY - Breast Cancer Support Group. Phone June 044-533 3062

PLEASE NOTE: Disclaimer:

The views expressed in What's New in Plett are not necessarily those of the Editors or Staff of What's New in Plett.

P.B.C.P.A - 082 251 8134

N.S.R.I - 082 990 5975

Police - 044 501 1900

Public Safety - 044 533 5000

Medlife Ambulance 044 533 6444

ER24 Ambulance 084 124

Fire & Rescue 044 501 3230

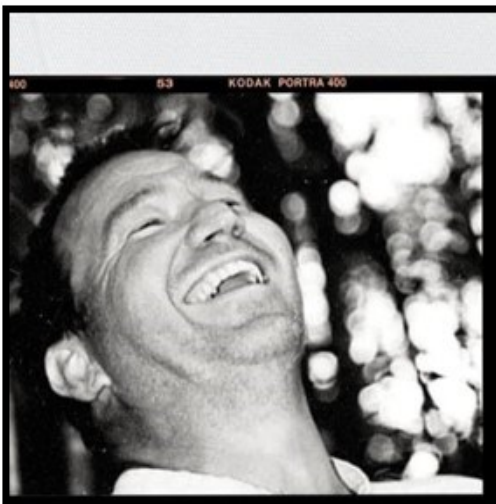
WHAT'S NEW IN PLETT - 30 MARCH 2023
WWW.HELLOPLETT.CO.ZA

CASH for your unwanted GOLD AND DIAMOND jewellery. Expert advice and discretion. No deal too big or small. 083 266 2500

CX APPLIANCE Plett Prompt service + Guaranteed repairs to DEFY & most leading brands of kitchen appliances. Call Jon CX Appliance Plett 0721493351

DO YOU NEED BUSINESS CARDS

Small or large quantities @ Great prices, good quality. Single, 2, 3 or Full Colour at The Print Shop 20 High Street, Plettenberg Bay
 Your local printers.



Verbeek Consulting

Financial Statement Reviews & Compilations.

Monthly Management Accounts.

Full Bookkeeping Services.

Quickbook, Pastel & Palladium.

Cell: 082 929 9801

paul@paulverbeek.co.za



CIMA

Practising Certificate Holder

A reminder to our community.

FAMSA assists with all forms of emotional and relationship challenges, e.g. depression, abuse, grief, trauma, parenting and divorce counselling. We would love to assist and make a difference. **Call 044 533 0515 for info.**

RING BINDING THE PRINT SHOP

20 High Street, Plettenberg Bay
 Phone 533 2530

COMPUTER SUPPORT.

Internet Connectivity
 VOIP - Voice over IP.
 Backup Solutions / Cloud Services.
 VPN - Virtual Private Networks.
 Hardware & Software Solutions.
 Enterprise Email.
 Jaco at Perfect Systems 082 676 2390

JILL SKOWNO PSYCHOLOGIST (Plett)
 landline discontinued. Please use cell or whatsapp 083 268 5402.

CARPET & UPHOLSTERY cleaning, protection and more... Call Chem Dry KPS 044-533 5573 or 082 563 1741

To all Grant's family and friends,

Please join us to celebrate the life of our dear husband, father, brother and friend next Friday 31 March, 2023.

Grant was a true Plett legend, who touched the lives of all of us, and his constant bright smile and good vibes will be sorely missed.

Details: Plettenberg Bay Country Club, at 1pm.

We look forward to sending him off with lots of good cheer!

PROPOSED REMOVAL OF RESTRICTIVE TITLE DEED CONDITIONS & PERMANENT DEPARTURE: PLETTENBERG BAY ERF 1866 (33 ROSHEEN CRESCENT, PLETTENBERG BAY)



APPLICANT: Marike Vreken Town Planners CC, marike@vreken.co.za / 044 382 0420
OWNER: MATTHEW GEORGE DE LA REY
JAMES JOHN DE LA REY

Notice is hereby given that Bitou Municipality has received the following application in terms of Sections 15(2)(b) & 15(2)(f) of the Bitou Municipality By-law on Municipal Land Use Planning Bylaw (2015) for the following:

1. A permanent departure to allow a relaxation of the 1.5m eastern lateral building line to accommodate the existing buildings (dwelling house & outbuilding) and the proposed additions & alterations to the existing buildings on Erf 1866 Plettenberg Bay, in terms of Section 15(2)(b) of the Bitou Municipality Land Use Planning Bylaw, 2015;
2. A permanent departure to allow a relaxation of the 3m western lateral building line to accommodate the proposed outbuilding on Erf 1866 Plettenberg Bay, in terms of Section 15(2)(b) of the Bitou Municipality Land Use Planning Bylaw, 2015;
3. A permanent departure to allow an outbuilding of two storeys within the 3m western lateral building line on Erf 1866 Plettenberg Bay, in terms of Section 15(2)(b) of the Bitou Municipality Land Use Planning Bylaw, 2015;
4. A permanent departure to allow a relaxation of the 4.5m aggregate side space to accommodate the existing and proposed buildings on Erf 1866 Plettenberg Bay, in terms of Section 15(2)(b) of the Bitou Municipality Land Use Planning Bylaw, 2015;
5. A permanent departure to allow a relaxation of the 4.5m street building line to accommodate the existing swimming pool & deck on Erf 1866 Plettenberg Bay, in terms of Section 15(2)(b) of the Bitou Municipality Land Use Planning Bylaw, 2015;
6. A permanent departure to allow a second dwelling of approximately 35m² on Erf 1866 Plettenberg Bay, in terms of Section 15(2)(b) of the Bitou Municipality Land Use Planning Bylaw, 2015;
7. Removal of restrictive condition E(4)(a-e), that limits the property to restrictive development parameters, as contained in Deed of Transfer T13887/2021 of Erf 1866 Plettenberg Bay from the Title Deed, in terms of Section 15(2)(f) of the Bitou Municipality Land Use Planning Bylaw, 2015;

A copy of the application is available for viewing at the Municipal office at unit 50 (Town Planning), Second Floor, Melville's Corner, 3 Kloof Street Plettenberg Bay, during normal office hours. Enquiries may be directed to town planning at 044 501 3303/3470/3317 townplanning@plett.gov.za

Any written comments may be addressed in terms of section 50 of the said legislation to townplanning@plett.gov.za and/or Municipal Manager, Bitou Municipality, Private Bag X1002, Plettenberg Bay, 6600 and/or fax number 086-457-3270 and/or be hand-delivered at the Municipal Offices on or before **30 days** from the date of publication of this notice, quoting your, name, address or contact details, interest in the application and reasons for comments. The Municipality may refuse to accept comment received after the closing date. Any person who cannot write will be assisted by a Municipal official by transcribing their comments.

The personal information of anyone who submits a comment / objection might be made available to the applicant/ owner or other party involved with the application and will be stored as public record.

VOORGESTELDE VERWYDERING VAN BEPERKENDE TITELAKTE VOORWAARDES & PERMANENTE AFWYKING: PLETTENBERGBAAI ERF 1866 (33 ROSHEEN CRESCENT, PLETTENBERGBAAI)

AANSOEKER: Marike Vreken Stadsbeplanners BK, marike@vrekco.co.za / 044 382 0420
EIENAAR: MATTHEW GEORGE DE LA REY
JAMES JOHN DE LA REY



Kennis word hiermee gegee dat Bitou Munisipaliteit die volgende aansoek ontvang het ingevolge Artikels 15(2)(b) & 15(2)(f) van die Bitou Munisipale Verordening op Munisipale Grondgebruikbeplanning Verordening (2015) vir die volgende:

1. 'n Permanente afwyking om 'n verslapping van die 1.5m oostelike sy boulyn toe te laat om die bestaande geboue (woonhuis en buitegebou) asook voorgestelde toevoegings en veranderings op Erf 1866 Plettenbergbaai te akkommodeer, ingevolge Artikel 15(2)(b) van die Bitou Munisipale Verordening op Munisipale Grondgebruikbeplanning (2015).
2. 'n Permanente afwyking om 'n verslapping van die 3m westelike sy boulyn toe te laat om die voorgestelde buitegebou op Erf 1866 Plettenbergbaai te akkommodeer, ingevolge Artikel 15(2)(b) van die Bitou Munisipale Verordening op Munisipale Grondgebruikbeplanning (2015).
3. 'n Permanente afwyking om 'n verslapping van die 3m westelike sy boulyn toe te laat om 'n twee verdieping buitegebou op Erf 1866 Plettenbergbaai te akkommodeer, ingevolge Artikel 15(2)(b) van die Bitou Munisipale Verordening op Munisipale Grondgebruikbeplanning (2015).
4. 'n Permanente afwyking om 'n verslapping van die 4.5m totale sypasie toe te laat om die nuwe voorgestelde geboue asook bestaande geboue op Erf 1866 Plettenbergbaai te akkommodeer, ingevolge Artikel 15(2)(b) van die Bitou Munisipale Verordening op Munisipale Grondgebruikbeplanning (2015).
5. 'n Permanente afwyking om 'n verslapping van die 4.5m straat boulyn toe te laat om die bestaande swembad en dek op Erf 1866 Plettenbergbaai te akkommodeer, ingevolge Artikel 15(2)(b) van die Bitou Munisipale Verordening op Munisipale Grondgebruikbeplanning (2015).
6. 'n Permanente afwyking om 'n tweede wooneenheid van ongeveer 35m² toe te laat op Erf 1866 Plettenbergbaai, ingevolge Artikel 15(2)(b) van die Bitou Munisipale Verordening op Munisipale Grondgebruikbeplanning (2015).
7. Die verwydering van beperkende titelakte voorwaarde E(4)(a-e) vervat in Transportakte T13887/2021 van Erf 1866 Plettenbergbaai, ingevolge Artikel 15(2)(f) van die Bitou Munisipale Verordening op Munisipale Grondgebruikbeplanning (2015) wat hierdie eiendom beperk tot addisionele ontwikkelings parameters.

'n Afskrif van die aansoek is beskikbaar vir besigtiging gedurende gewone kantoorure by die Munisipale Stadsbeplannings kantoor (Melville's Corner Winkelsentrum, Eenheid 50, h/v Main- en Strand Straat, Plettenbergbaai). Navrae kan gerig word aan stadsbeplanning by 044 501 3303/3470/3317 townplanning@plett.gov.za.

Enige skriftelike kommentaar ingevolge Artikel 50 van die genoemde wetgewing kan gerig word aan townplanning@plett.gov.za en / of aan die Munisipale Bestuurder, Bitou Munisipaliteit, Privaatsak X1002, Plettenbergbaai, 6600 en / of faksnommer 086-457-3270 en / of afgelewer word by die Munisipale Kantore voor of op 30 dae vanaf die datum van publikasie van hierdie kennisgewing, met verwysing van u naam, adres of kontakbesonderhede, belangstelling in die aansoek en redes vir kommentaar. Die munisipaliteit mag weier om kommentaar wat na die sluitingsdatum ontvang is, te aanvaar. Persone wat nie kan skryf nie, sal deur 'n munisipale amptenaar bygestaan word deur die kommentaar af te skryf.

Die persoonlike inligting van enigiemand wat kommentaar / beswaar indien, kan beskikbaar gestel word aan die aansoeker/eienaar of ander party betrokke by die aansoek en sal as publieke rekord gestoor word.



BITOU LOCAL MUNICIPALITY

LAND USE MANAGEMENT NOTICE

Notice is hereby given that Bitou municipality has received the below tabled applications in terms of Bitou Municipality Land Use Planning By-Law, section 15(2).

| Property description | Type of Application |
|---|---|
| Erf 69 Natures Valley, | <ol style="list-style-type: none">Proposed removal of restrictive title deed (T000008835/2013) conditions:<ol style="list-style-type: none">Clause F.(a).3.(d), clause F.(b).1 and clause F.(c).2- No buildings allowed closer than 6.15m from the street boundary, and 3.15m from a lateral or rear boundary.Clause F.(b).7 roof materials restricts the use of galvanised iron or asbestos roof sheets.Permanent building line departure to relax:<ol style="list-style-type: none">Clause 3.3.2 - No buildings allowed closer than 4m from the street boundary, and 2m from a lateral or rear boundary.Clause 3.3.3(a) - building lines (average width of erf is less than 20m) |
| Portion 43 of Redford Farm No.232, | <ol style="list-style-type: none">Proposed subdivision into two portions (i.e., Portion A of approximately 21,8ha, and the Remainder of Pt 43/232 of approximately 25,7ha) as indicated in the proposed subdivision plan no. F232P43/SUB dated June 2022 |
| Portion 20 of the Farm Roodefontein No. 440 | <ol style="list-style-type: none">Proposed subdivision of 'Farm 440/20' into two portions (i.e., Portion A of approximately 3,9ha and the Remainder of approximately 4,9ha) as indicated in the proposed subdivision plan No. F440P20/SUB dated June 2021. |

A copy of the application is available viewing at the Municipal office at unit 50 (Town Planning), Second Floor, Melville's Corner, 3 Kloof Street Plettenberg Bay, during normal office hours. Enquiries may be directed to Olwethu Yonke at 044 501 3317/ oyonke@plett.gov.za

Any comments or objections to the application, with reasons therefor, must be lodged in writing to the abovementioned official by means of email or hand-delivery within 30 days from the date of publication of this notice, and must include the name & contact details of the person concerned. Comments/ objections received after 30 days may be disregarded. A person who cannot write may visit the Town Planning Office, where a staff member will assist to transcribe their comments.

The personal information of anyone who submits comment / objection might be made available as part of processing the application.

Mr Mbulelo Memani

Municipal Manager

Bitou Local Municipality, Private Bag X1002, Plettenberg Bay, 6600

Notice No 108/2023

ELECTRICAL REPAIRS/MAINTENANCE

Registered electrical contractor operating in Plettenberg Bay for the last 10 years available for any electrical works - visit my website for customer feedback.

Small Install Works
Certificate of Compliance
Intercom Installs & Repairs
Electrical Maintenance & Fault Finding
Inverter, Battery Backup & Full Solar Installs
Geyser Repairs

073 836 9349

FUTURE DESIGN



www.f-d-t.co.za

TECHNOLOGIES

GOLD TRADER KNYSNA HAS MOVED to Knysna Mall – West End (near Spar). We are now called Goldex and are no longer in Main St. Knysna. Tel. Glen 082 7888 700 or 044 - 382 0417. Also open Sat. mornings.

RESIDENTS AND VISITORS: Please do not put out your garbage bags until the morning of collection. There are baboons in the area, as well as seagulls which tear open the bags

FIREPLACE SERVICES AND REPAIRS.

Get your fireplace into tip top condition. Serviced, refurbished, chimney sweep, fault fixing....
Call the Fireplace Guy on 083 628 0300.



NSRI

CALL OUT PROCEDURES TO CONTACT SEA RESCUE

Phone the NSRI emergency tel number **082 990 5975**

give the the following info:

1. Your name and telephone number.
2. Your Position
3. Position of casualty.
4. Nature of casualty.

Give as much information as possible & stay in position and keep your telephone line open.

If problems with above cell number try the below:

Deon Truter 082 569 5542
Marc Rodger 082 780 6427
Steff Le Roux 082 440 0932
Rob Gibson 083 277 0992

Moon Shine on Whiskey Creek - The Crags.

We are offering super special discounts for off-peak stays. From 15% to 25% Direct bookings only
www.whiskeycreek.co.za
WhatsApp 072 200665

antony gardy dentistry

general • cosmetic • implant

044 533 0961

CASH FOR GOLD

Your unwanted or broken gold jewellery.
Best prices guaranteed
Appointment at your convenience
All deals very discreet
Call Domenico tel. 083 266 2500

PLETT HANDYMAN - General Home Maintenance. 072 477 3230

FAMSA provides support & counselling in a safe environment for folk experiencing challenges with relationships. Also for depression abuse, trauma, parenting and grief.
Please call 044 533 0515.

BEN EVENTS WE OFFER experienced staff for any event in garden route contact us on 073 0188 373 ben@benevents.co.za
www.benevents.co.za

THE LINENE DEPOT 5 MARKET STREET KNYSNA we stock huge range of quality ex-hotel linens at unbeatable prices 079 6836 783

DEFY REPAIRS to stoves, washing machines, dishwashers, tumble driers & microwaves. Prompt service + Guaranteed repairs. Call Jon CX Appliance Plett 0721493351

ADVANCED FOOT CARE Sr Gillian essential service provider corns Callouses etc 072 672 4162



CHARITY SHOP

044 533 5616 or Sharon 078 735 2053

Your donation will help us provide holistic palliative care to patients who, together with their families, are facing life-limiting illness.

ALEX PLUMBING 24/7 SERVICES cc

(PTY) LTD: New installation, Bathroom renovation, house renovation, Toilet, Basin, Bath, Showers, Galvanized pipe removal & all General Maintenance.
Phone 082 838 0591

ELECTRICAL PLUMBING SERVICES
available 24 hours contact Desmond 082 728 1240

WHAT'S NEW IN PLETT - 30 MARCH 2023
www.helloplett.co.za

Angelina Lewack is looking for domestic work on Tuesday, Wednesday and Thursday.
References are available.
Please contact Angelina at tel. 078 - 606 9470. (Incl. whatsapp.)



Hutton Medical
Wellness Centre

LASER HAIR REMOVAL

Plettenberg Bay
Soprano Ice Platinum

For Bookings: 044 533 0518

reception@huttonmedical.co.za
www.huttonmedical.co.za

**Hutton Medical
Wellness Centre**



**HOME
IS OUR
STORY**



Seeff

Expertise Built Through Generations of Trust

PROPERTIES OF THE WEEK

MODERN ARCHITECT DESIGNED HOME ON PREFERRED SECURITY ESTATE – R 12 950 000

Breathtaking views greet you from the moment you enter this contemporary well-designed home in a sought after position adjacent to the protected green belt. Each room in this four-bedroom, four bathroom, north facing masterpiece is designed to take full advantage of the unique, uninterrupted views across the valley and capture the essence of eco estate living.

Web ref: RLS922962 | 4 bedrooms | 4 bathrooms | 2 garages

John Carpenter 082 460 3838

FABULOUS FAMILY HOME IN SECURE ESTATE – R 9 450 000

This modern, North facing home offers you the whole package - excellent security in the ever-popular Brackenridge Estate, high-end finishes, a myriad of accommodation options for extended family and friends holidaying together, privacy and lots of space with tranquil views over the countryside.

Web ref: RLS899261 | 5 bedrooms | 6 bathrooms | 2 garages

Alet Ollemans 083 657 5678

NEW FARM ON THE MARKET - R 7 500 000

A double storey main house with entrance hall, open plan lounge and dining room with sliding doors leading to the patio area and front garden. There is a well-appointed kitchen with gas hob, pantry, scullery, and a bar. Outside entertainment area boasts a lapa, built-in-braai, pizza oven and a swimming pool.

Web ref: RLS920412 | 5 bedrooms | 4 bathrooms | 2 garages

Dirk Green 082 814 4508 | Connie Peet 083 353 5971

SPACIOUS MODERN HOME WITH SEA & MOUNTAIN VIEWS – R 4 495 000

This spacious, single-level home is north-facing and offers open vistas of the ocean and the Tsitsikamma mountains. It is ideal for those who would like to live entirely on one level with the luxury of a separate self-contained flatlet for guests.

Web ref: RLS920844 | 5 bedrooms | 4½ bathrooms | 1 garages

Andrew Iles 082 462 0432

LOOKOUT VIEW - NEW LUXURY APARTMENTS - NO TRANSFER DUTY – From R 3 850 000

This exclusive development accommodates 14 spacious and modern units altogether, with a choice of two, three or four bedroomed apartments on each of the three floors. The ground and first floors house five units each while the third floor has four penthouse units. Floor area ranges between 136sq.m. to 205sq.m.

Web ref: RLS921362 | 2 bedrooms | 2½ bathrooms | 1 parking

Daniel van Renen 082 883 6271

A SEA VISTA OF NOTE! – R 950 000

Wonderful sea and Robberg views, from this very pretty stand, in a great position in beautiful Schoongezicht secure eco estate. In very short supply, owing to the fast moving market, this large stand will be perfect for your dream build.

Web ref: RLS908686 | Size: 1,061m²

Paul Lewry 082 857 8835

We have pre-qualified tenants looking for homes to rent in your area.


If you are interested in achieving a premium rental income every month and having it professionally managed, please call Helen on 082 450 0007 or email helen.moulster@seeff.com

Tel: 044 533 0311

Fax: 044 533 0339

Email plett@seeff.com

www.seeff.com

 private property

 ooba

In association
with

 HAMPTONS
INTERNATIONAL